



# INSTRUCTIONS

-J00431

REV. 3-20-97

Kit Number 68471-94

## REAR DIRECTIONAL RELOCATION KIT

### General

This kit is designed for installation on 1994 and later XL motorcycles. This kit must be used when saddlebag, Part Nos. 91010-91A or 91004-94 are installed on vehicle.

#### NOTE

A pick tool (Snap-On TT600-3) will be required for 1996, 1997 and 1998 model vehicles for removing and reinstalling a multilock amp connector.

Kit Contents:	QTY	DESCRIPTION
	2	Button head screw, 5/16-18 x 1-5/8 in.
	2	Button head screw, 5/16-18 x 1-3/4 in.
	2	Spacer, thick
	2	Spacer, thin
	2	Hex cap screw, 5/16-24 x 4-1/2 in.
	2	Locknut
	2	Relocation pad
	2	Secondary lock

#### NOTE

A Service Manual for your vehicle is available from your Harley-Davidson Dealer.

### Installation- Hugger Models Only

#### ⚠ WARNING

To perform the following steps for Hugger Models only, fender and frame must be sufficiently supported, as both shocks will need to be removed at the same time. If the vehicle is not properly supported injury to motorcycle or person installing kit could occur. If this installation is beyond your capabilities or if you do not have the proper tools to perform this installation, see your Harley-Davidson Dealer.

1. Remove seat, sissy bar and sideplate, if applicable. Retain hardware. Disconnect battery, negative cable first.

#### ⚠ WARNING

To avoid accidental start-up of motorcycle, and possible personal injury, disconnect the battery cables (negative cable first) before performing any of the following procedures. If the positive cable should contact ground with the negative cable installed, the resulting sparks may cause a battery explosion resulting in personal injury.

2. Properly support motorcycle under frame to prepare for removal of right and left shocks.
3. Remove rear button head screw on both sides of fender.
4. See Figure 1. With rear fender and frame securely supported, remove left and right shocks by removing upper nut (2), washer(s) (3) and shock cover (4). Remove bolt (6), washer (7) and locknut (8) at lower shock mount. Remove shock.

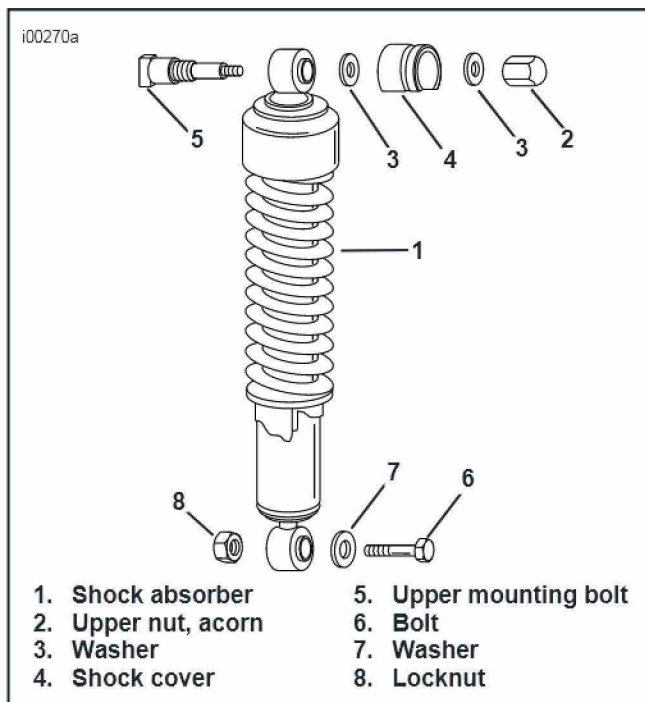


Figure 1. Shock Absorber Removal  
Hugger Models Only

5. Install long 4-1/2 in. bolt (1) from kit, from inside of fender out through rear holes where button head screws were removed in Step 3.
6. Reinstall shocks using original hardware. Torque acorn nut (2) to 21 -35 ft-lbs. Torque locknut (8) to 30 - 50 ft-lbs.
7. Continue on to the next section.

### Installation- All Models Including Huggers

1. Remove seat, sissy bar, and sideplates, if applicable. Retain all parts and hardware. Disconnect battery, negative cable first.

#### ⚠ WARNING

To avoid accidental start-up of motorcycle, and possible personal injury, disconnect the battery cables (negative cable first) before performing any of the following procedures. If the positive cable should contact ground with the negative cable installed, the resulting sparks may cause a battery explosion resulting in personal injury.

2. See Figure 2. Disconnect directional electrical system by removing connector from T-stud on frame.

#### NOTE

1998 vehicles have a 2-place multilock amp connector and 1996-1997 vehicles have an 8-place multilock amp connector. 1994-1995 vehicles have a Deutsch connector (13) as shown in Figure 2.

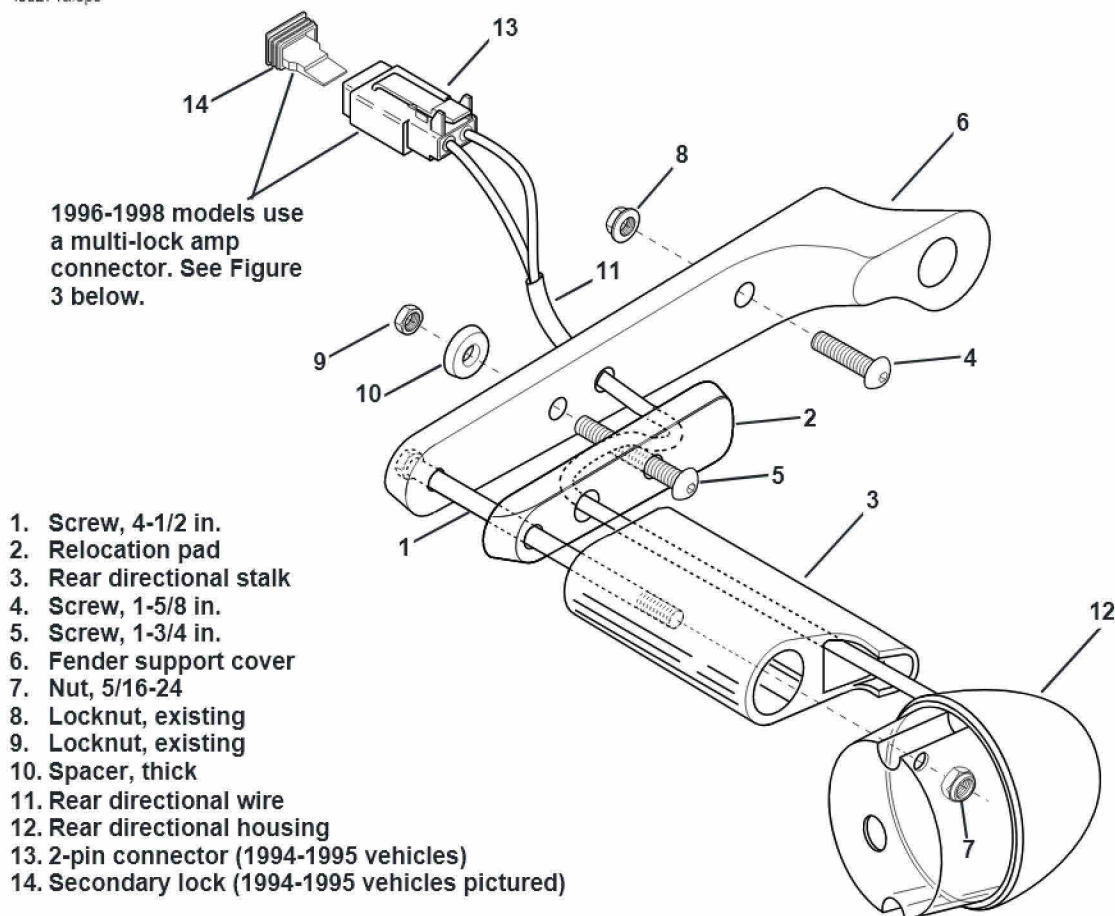


Figure 2. Routing Rear Directional Wires and Installing Relocation Pad

**NOTE**

Before performing the next step, notice location of wires in contact so they may be later reinstalled in their same position.

3. On 1994 - 1995 vehicles, with 2 pin connectors, separate connector halves. Remove orange secondary lock (14) from directional connector (13). Remove contact by gently pulling wires (one at a time) away from contact, while releasing small locking tabs on inside of connector, using a small flat head screwdriver. Pull wires back through frame.

**NOTE**

See Service Manual for more detailed instructions on amp multilock electrical connector installation and removal.

**NOTE**

On 1996 - 1997 vehicles, the multilock amp connector is under the seat. On 1998 models, the multilock amp connector is under the lens plate of the taillight. See Service Manual for more detailed instructions.

On 1998 models, it is necessary to remove the taillight lens to access the amp multilock connector. On 1996-1998 vehicles with multilock amp connectors, remove the connector from the retaining device according to Service Manual instructions:

- a Open the secondary lock.
- b Insert the pick into cavity on inboard side of connector.
- c Pivot end of pick to release tang.
- d Gently tug on wire to remove terminal from housing.

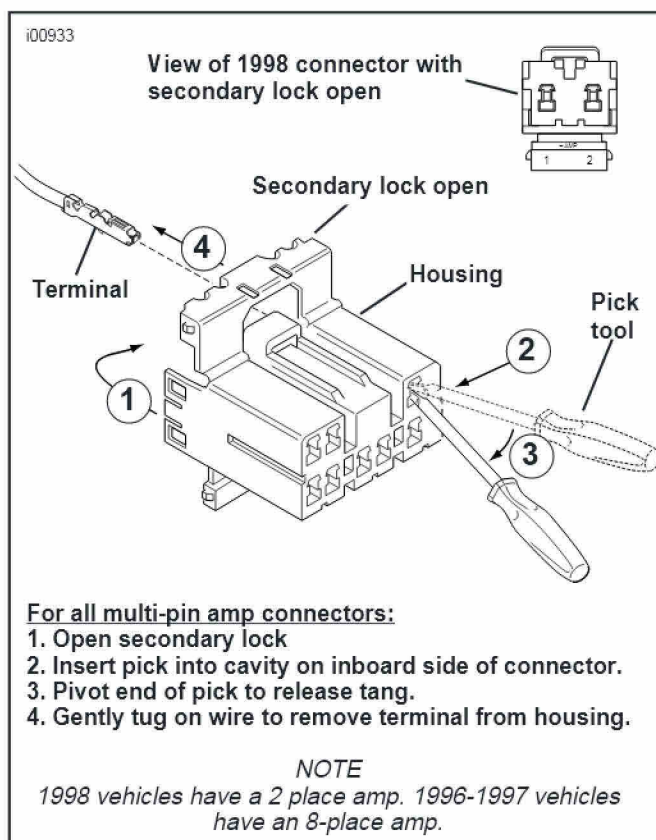


Figure 3. Amp Multilock Electrical Connectors



#### NOTE

*Perform the following procedures one side at a time until instructed to go to opposite side of vehicle.*

4. Remove button head screw(s) and locknut(s) that secure fender support cover to frame. (If you have a Hugger model with a sissy bar, one of these screws and locknuts may already be removed.) Retain hardware for later reinstallation.
5. Remove nut on inside of fender that secures rear directional to fender. Retain nut.
6. Remove rear directional stud from fender support cover and rear directional assembly. Discard stud.
7. Take note of how rear directional wire is routed on inside of fender support cover (for later re-routing) and untape wire from fender support cover.
8. See Figure 2. Using a small piece of tape, tack large spacer (10) from kit onto frame over hole from which rear directional stud was removed.

#### NOTE

*Before performing next step, make sure that T-spacer located on inside of fender is still in place.*

9. **All Models Except Hugger.** See Figure 2. Locate 4-1/2 in. rear directional bolt (1) from kit. Insert bolt, from inside of fender, out through rearmost hole in fender frame. Leave loosely in place.

#### NOTE

*Narrow end of relocation pad should be pointed to rear of motorcycle if it is properly position in next step.*

10. Insert wire from rear directional through center hole in relocation pad, along channel on the inside of the pad and through third hole from rear in fender support cover. Re-route wire back along inside of fender support cover and retape into place on back of fender support cover.

#### 11. Non-sissy bar models only.

- See Figure 2. Install rear directional with relocation pad and fender support cover onto fender using 4-1/2 in. bolt (1) inserted through rear of fender in Step 9. Tighten bolt until snug.
- Install 1-5/8 in. bolt (5) from kit through forwardmost hole of relocation pad (2), fender support cover (6), thick spacer (10) (taped to frame) and fender support. Reinstall using original nut (9) removed in Step 5.
- Reinstall original nut (8) and bolt (4) removed from forwardmost hole in fender support cover (6). Tighten finger tight.

#### Models with sissy bars.

- Place fender support cover (6) over fender support. Reinstall sissy bar sideplate over cover and loosely secure using original hardware.
- Insert 1-3/4 in. bolt (5) from kit through front hole of relocation pad (2). Place small washer over bolt (5) and install pad (2) by inserting bolt (5) through fender support cover (6), thick spacer (10) (taped to frame and fender support). Loosely secure with original nut (9).
- Install turn signal assembly onto pad using 4-1/2 in. bolt inserted through fender in Step 9. Tighten until just snug.

12. All models. Remove lens from rear directional. Remove bulb from rear directional. Retain all parts.
13. Tighten 4-1/2 in. rear directional bolt (1) from inside of fender to 12 ft-lbs. Install locknut (7) from kit onto bolt at inside of directional housing (12). Tighten securely.
14. Tighten two button head screws (4 & 5) to 12 ft-lbs.
15. Reinstall bulb and rear directional lens.
16. Repeat Steps 4 - 15 for opposite side of vehicle.
17. **For 1994 - 1995 models:** Reroute rear directional wires through frame. Reinsert wires into rubber seal in 2-pin connector (13), making sure wires are in proper location. Push upward until you feel wires snap into place. Gently tug on wires to make sure connection is made. Install new secondary lock (14) from kit onto connector. Proceed to step 18.

#### NOTE

*See Service Manual for more detailed instructions on installing and removing amp multilock electrical connectors.*

**On 1996 - 1998 models:** Reroute rear directional wires through frame.

From the secondary lock side of the connector, insert the terminal into its respective numbered chamber until it snaps in place according to Service Manual instructions. For proper fit, the slot in the terminal must face the tang in the chamber.

Gently tug on wire end to verify that the terminal is locked in place and will not back out of chamber. Rotate the hinged secondary lock inward until tabs fully engage latches on both sides of connector. Insert the socket housing into the pin housing until it snaps into place. Install connector on retaining device either attachment or rosebud clip.

18. Reconnect rear directional and reinstall onto T-stud on frame.

**On 1998 models,** insert connector into terminal block located under taillight lens. Reinstall taillight lens.

#### WARNING

**Always connect the positive battery cable first. If the positive cable should contact ground with the negative cable installed, the resulting sparks may cause a battery explosion resulting in personal injury.**

#### WARNING

**After installing seat, pull upward on front of seat to be sure it is locked in position. If seat is loose, it could shift position during vehicle operation and startle the rider, causing loss of control and personal injury.**

19. Reconnect battery (positive cable first) and test rear directionals for proper operation. Reinstall seat and sissybar, if applicable.