



# INSTRUCTIONS

-J01077

REV. 9-22-98

Kit Number 90465-98

## XL DOCKING HARDWARE/DIRECTIONAL RELOCATION KIT

### General

This docking hardware kit is designed to be used along with the following XL saddlebag kit which requires directional relocation:

Sportster Leather Saddlebags, 90598-96  
(comes with directional relocation parts included)

See Service Parts illustration for kit contents.

### Installation

1. See Service Parts illustration. Follow directions supplied with saddlebags to relocate rear turn signals but also use the following exceptions to install the parts contained in this kit:

- Use turn signal studs (4) in place of hex bolts supplied with saddlebags. The longer studs are required to accommodate the rear docking points.

- On each side, insert relocation pad plate (3), saddlebag mount spacer (12), rear docking point (2), and docking point spacer (11) between relocation pad (supplied with saddlebags) and fender support cover as shown.

- Use 4 inch long capscrew (5) in place of hex bolts supplied with saddlebags. The longer capscrews are required to accommodate the rear docking points.

- The turn signal wires should be routed under the fender support cover back to the connectors they were removed from following the directions supplied with saddlebags.

- Before mounting saddlebag supports, remove acorn nut from upper shock mount and install washer (7) and shock mount spacer (8) as shown in Service Parts illustration. Tighten shock mount spacer to 30-50 ft-lbs (41-68 Nm). This will properly space out the saddlebags to accommodate the docking points.

2. Mount front docking points with buttonhead screws (9) and locknuts (1) as shown in Service Parts illustration. Tighten locknuts to 8-10 ft-lbs (11-14 Nm).
3. Mount saddlebag support following directions supplied in saddlebag kit and install saddlebags.

### WARNING

To avoid personal injury, be sure to read all warnings included in the instructions supplied with your saddlebag kit. If you have discarded the instructions supplied with your saddlebag kit, your Harley-Davidson dealer can supply you with another copy.



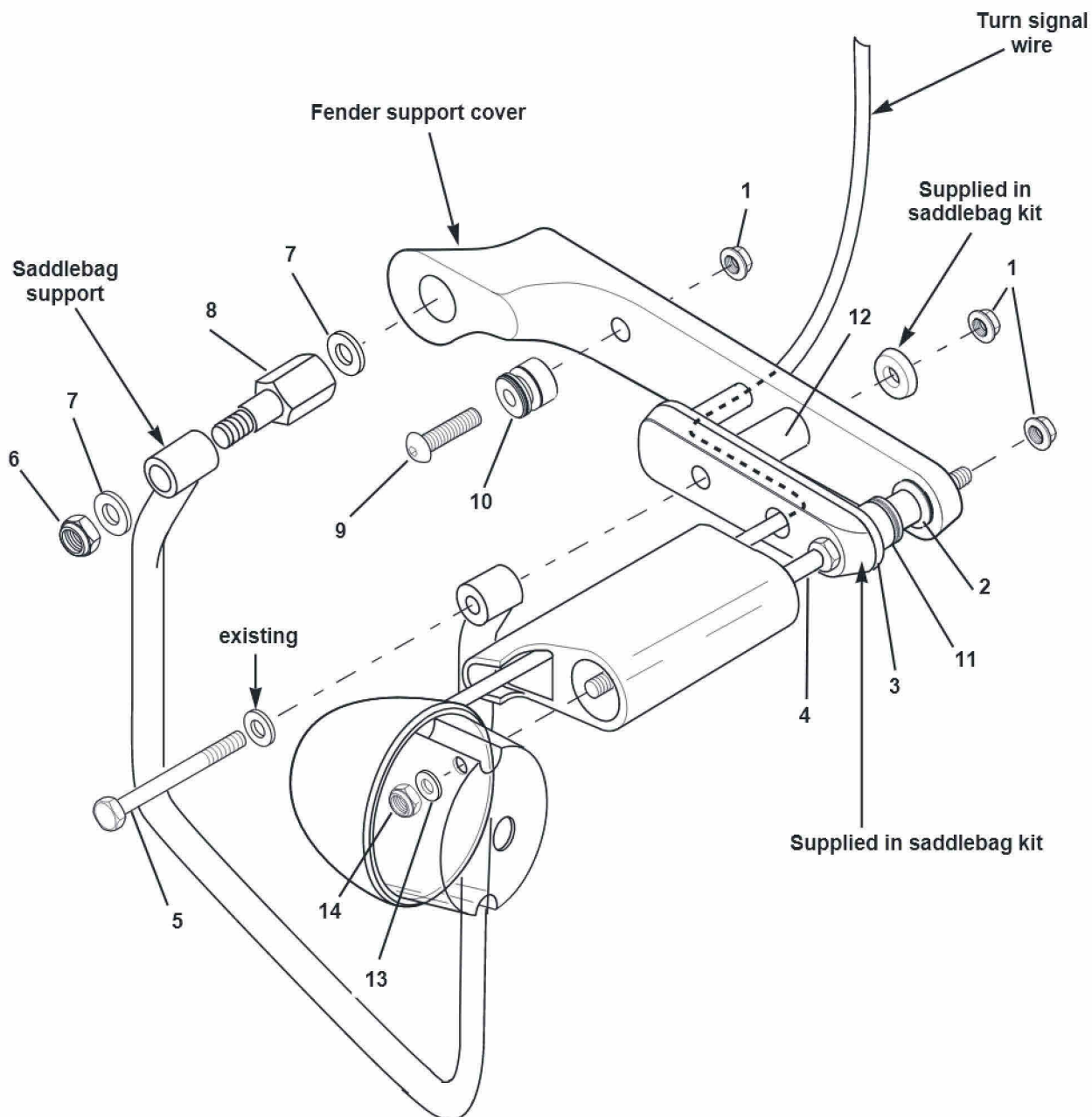
# Service Parts

Part No. 90465-98

Date 9-98

## XL Docking Hardware/Directional

sp90465



Item	Description	Part No.
1	Locknuts (6), 5/16-18	7531
2	Rear docking points (2)	53686-96A
3	Relocation pad plates (2)	59681-98
4	Turn signal studs (2)	90466-98
5	Capscrews (2), 5/16-18 x 4 in. long	4100HW
6	Locknuts (2), 3/8-16	7778
7	Washers (4), 3/8	6701

Item	Description	Part No.
8	Shock mount spacers (2)	90506-98
9	Capscrew (2), buttonhead, 5/16-18 x 2-1/4 in. long	4184
10	Front docking points (2)	53685-96
11	Docking point spacers (2)	53775-98
12	Saddlebag mount spacers (2)	53776-98
13	Washers (2), 1/4	6703
14	Locknuts (2) 1/4-20	7686