



# INSTRUCTIONS

-J01536

REV 3-17-99

Kit Numbers 16457-96B, 16458-96B

## SCREAMIN' EAGLE SPORTSTER XL 1200 CYLINDER HEAD KIT

### General

This instruction sheet covers the following Cylinder Head Kit part numbers:

Part No.	Description
16457-96B	Silver heads
16458-96B	Black heads

These kits are designed for installation on 1991 and later XL 1200 models.

### Additional Required Parts

On all models, a Top End Overhaul Gasket Kit, Part No.17032-91 must be purchased from your Harley-Davidson Dealership. In addition, on 1991 models the four (two per head) stock short head screws must be replaced with Part No. 16480-92 heads screws.

#### NOTE

*Service Parts for these kits are listed on page 2. A Service Manual for your motorcycle is available at your Harley-Davidson Dealership.*

### Installation

#### CAUTION

**This engine-related performance part is intended for High Performance only and is legal for sale or use in California on pollution controlled motor vehicles. This kit may may reduce or void the limited vehicle warranty. Engine related performance parts are intended for the experienced rider only.**

1. Refer to appropriate Service Manual for all removal, assembly and disassembly procedures.
2. Remove existing cylinder head assemblies.

#### CAUTION

**For 1991 models, it is very important that head screws, Part No. 16480-92 are used. The stock 1991 screws length is 1-11/16 in. The Part No. 16480-92 screws length is 1-7/8 in. Damage to engine could occur if shorter screws are used.**

#### NOTE

*This kit contains secondary hole plugs for use if cylinder heads are used with only one spark plug. If the ignition system used does not support dual spark plug cylinder heads, install a secondary hole plug and gasket (item 16 on Service Parts illustration) into the middle spark plug hole in each cylinder head (the hole located under the center of the rocker boxes). See Service Parts illustration for location. Tighten hole plug to 11-18 ft-lbs (15-24 Nm).3.*

Install new cylinder heads using appropriate Service Manual procedures and new gaskets from Top Overhaul Gasket Kit, Part No.17032-91. On 1991 models, make certain Part No. 16480-92 heads screws are used.

#### NOTE

*Due to increased compression ratio, use at least 91 octane gasoline. Octane rating is usually found on the pump.*

4. Check assembly for proper installation and operation.

#### NOTE

*The Product Information Label contained in this kit is required in the state of California only. This label is required to aid in passing the California smog Check Program. Place the information label on the right side of the frame directly beneath the VIN sticker. Do not place the label over other product information labels. Do not place the label on motorcycles other than those specified in this instruction sheet.*



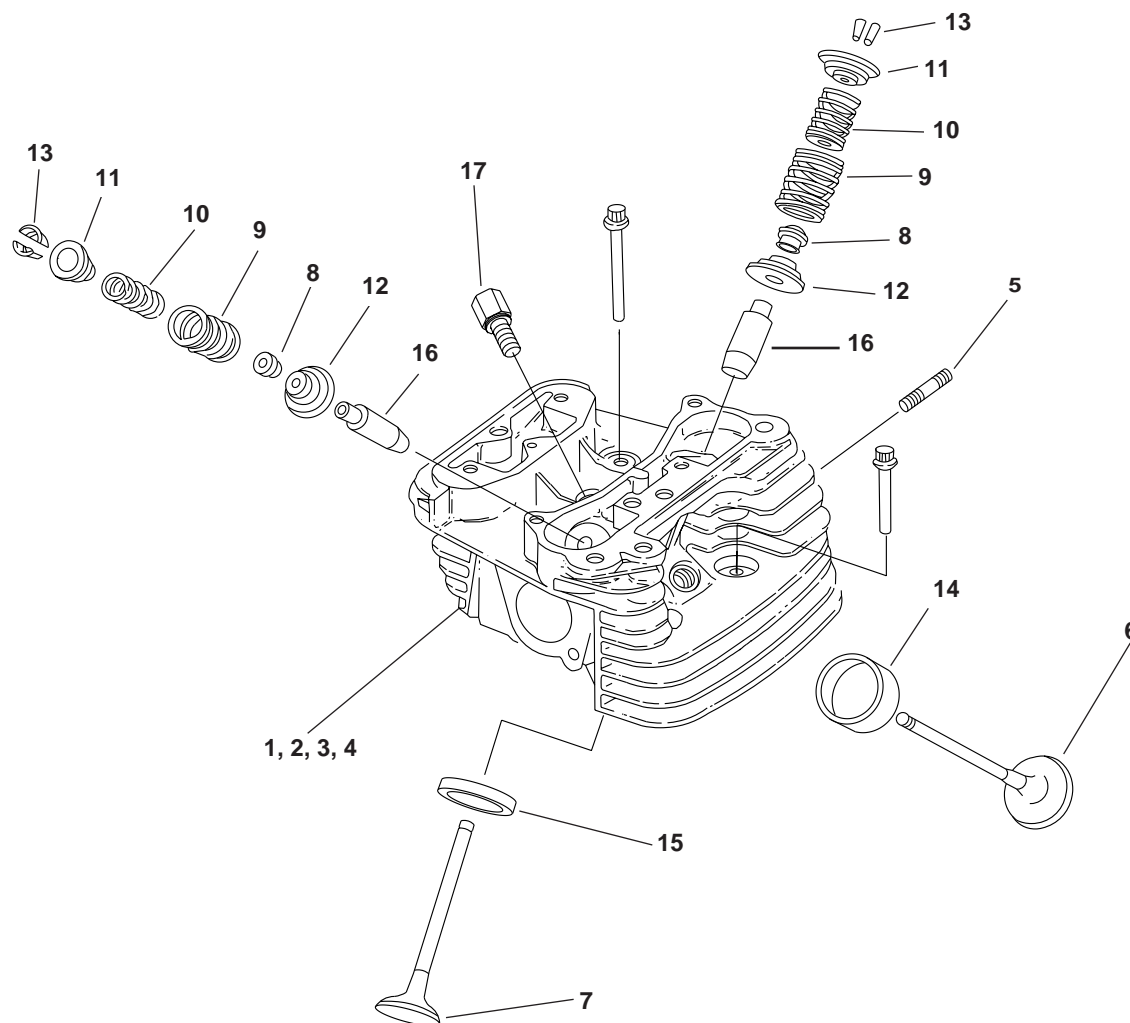
# Service Parts

16457-96B and 16458-96B

Date 3/99

Screamin' Eagle 1200 XL Cylinder Heads

sp16459



## Kit Numbers 16457-96B, 16458-96B

Item	Description	Part No.	Item	Description	Part No.
1	Front cylinder head, silver*	16754-96A	10	Valve spring, inner (4)	18202-83
2	Rear cylinder head silver*	16756-96A	11	Collar, valve spring-upper (4)	18219-81
3	Front cylinder head, black*	16753-96A	12	Collar, valve spring-lower (4)	18222-83
4	Rear cylinder head, black*	16755-96A	13	Retainer, valve collar (8)	18229-83
5	Stud, exhaust port (4)	16715-83	14	Intake valve seat (2)	18020-87
6	Intake valve (2)	18023-87	15	Exhaust valve seat (2)	18022-96Y
7	Exhaust valve (2)	18024-87	16	Valve guide, intake and exhaust (4)	18113-96Y
8	Seal, valve (4)	18001-83B	17	Secondary hole plug and spark plug gasket (2)	16604-98
9	Valve spring, outer (4)	18201-83	18	E.O. Label (1) (not shown)	Not sold

**\* With valve guides and seats installed**

Note: Quantities shown are for kit, only one cylinder head assembly shown