



INSTRUCTIONS

-J01607

REV. 5-21-99

Kit Number 69112-95B

883 SPORTSTER CHROME HORN KIT

General

This kit is designed for installation on 1992 and later 883 Sportster model vehicles.

See Service Parts Illustration for kit contents.

WARNING

To avoid accidental start-up of motorcycle, and possible personal injury, disconnect the battery cables (negative cable first) before performing any of the following procedures. If the battery should contact ground with the negative cable installed, the resulting sparks may cause a battery explosion resulting in death or serious personal injury.

Installation- All Models

1. See Figure 1. Remove nut from horn mounting stud (1). Assemble chrome horn cover (4) onto horn (5) using the *middle* hole in the horn cover bracket (6), as shown. Install lockwasher (2) supplied in kit onto the horn mounting stud (1). Apply 1-2 drops of Loctite 242 (blue) to the threads of the mounting nut (3). Tighten nut to 110 **in-lbs**.
2. Push clip nuts (7) into bracket holes on top and bottom of horn cover bracket (6).
3. See Figure 2. Place horn mounting bracket (1) over top and bottom holes in horn cover bracket (2). Install 1/4-20 x 1/2 in. bolt (3) from kit through lower hole in bracket. Insert remaining 1/4-20 x 1/2 in. bolt (4) through hole in horn wire clip (5) and secure bolt (4) to top hole in horn mounting bracket (1). Tighten bolts (3 and 4) to 5-8 **in-lbs**.

Installation- 1992 – 1994 XL Models

1. Remove front fuel tank / coil mounting bolt and nut. Remove original horn and horn spacer. Retain nut.
2. Raise front of tank to expose cable strap securing horn wire lead(s) to frame. Cut cable strap and remove horn wire(s) from wire bundle. Secure remaining wires to frame with new cable strap from kit.
3. Route horn wire behind engine bracket for later reinstallation.

NOTE

In the next step, the following bolt from kit should be used with the corresponding model years:

1992 XL 5/16-18 x 3 in. bolt
1993-1994 XL 5/16-18 x 3-5/8 in. bolt

4. Install new front bolt from kit to fuel tank mount, using 5/16-18 x 3 in. bolt on 1992 models and 5/16-18 x 3-5/8 in. bolt on 1993 and 1994 models. Tighten bolt to 96-192 **in-lbs** (10.8-216 **N-M**.)

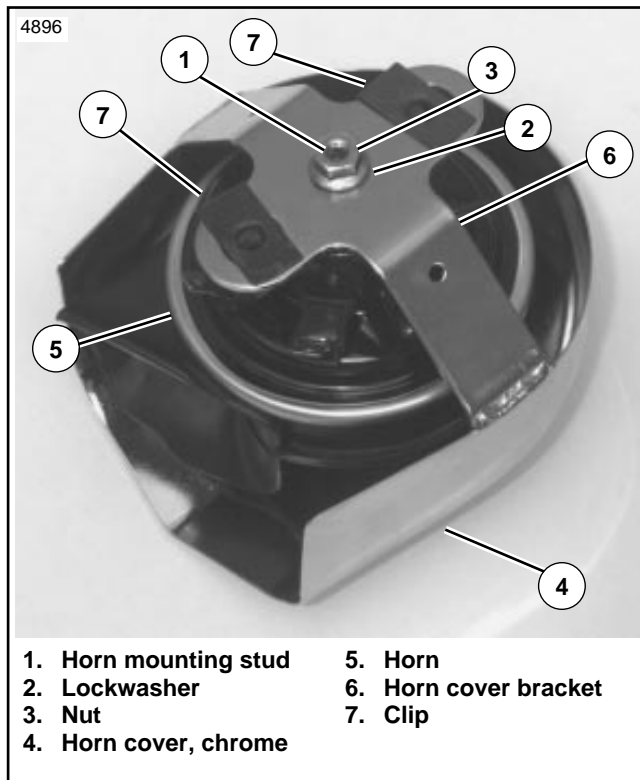


Figure 1. Horn Cover and Hardware - All Models

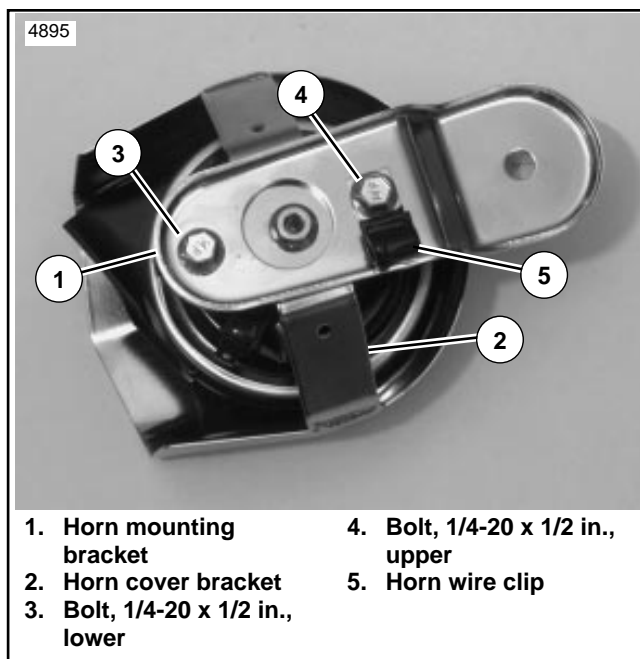


Figure 2. Horn Mounting Bracket Installation

5. Loosen nut on back of enrichener cable and remove cable from bracket.
6. See Figure 3. Loosen ignition switch housing nut on underside of engine bracket (1). Remove allen head bolt (2) and existing enrichener bracket (not shown) from top of engine bracket (1).
7. Install new enrichener bracket (3) from kit (in same location as original) using new allen head bolt (2) from kit. Tighten to 6-120 **in-lbs** (6.7-13.5 **N-M**.)
8. Tighten ignition switch housing nut. Reinstall enrichener cable. Tighten nut securely.
9. Install rubber mount (4) onto enrichener bracket (3).
10. Reconnect wires from harness to horn. Install wire into horn wire bracket.
11. Install ground wire from kit. Route to rear head top motor mount bolt
12. Position horn assembly (5) into place onto rubber mount (4). Install lockwasher over stud. Secure assembly using acorn nut (6) from kit. Tighten to 60-180 **in-lbs** (6.7-20 **N-M**.)

⚠ WARNING

Always connect the positive battery cable first. If the positive cable should contact ground with the negative cable installed, the resulting sparks may cause a battery explosion resulting in death or serious injury.

13. Using cable strap, secure excess horn wire to main wiring harness under tank. Reconnect battery and test horn assembly for proper operation.

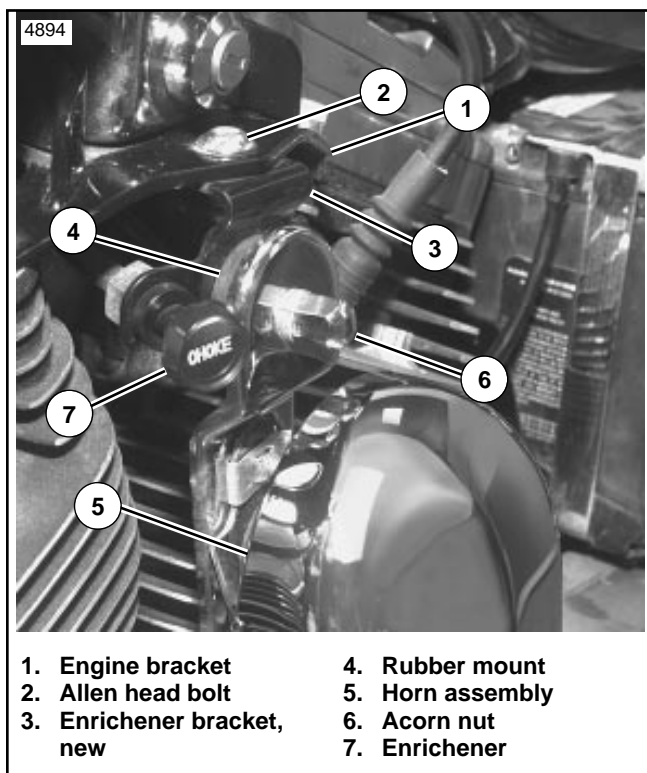


Figure 3. Horn Assembly Installation - 1992 - 1994 Models

Installation- 1995 and Later XL Models

1. Remove front fuel tank / coil mounting bolt and nut. Remove original horn and horn spacer. Retain nut.
2. Install new 3-5/8 in. bolt included with kit using original nut. Tighten bolt to 96-192 **in-lbs** (10.8-216 **N-M**.)
3. Cut cable strap and remove horn wire(s) from wire bundle. Secure remaining wires to frame with new cable strap from kit.
4. See Figure 4. Loosen nut on back of enrichener cable. Remove enrichener cover and relocate enrichener (1) below engine bracket.
5. Place enrichener bracket (5) over engine bracket. Install rubber mount (2) through enrichener and engine brackets. Secure with locknut. Tighten to 60-180 **in-lbs** (6.7-20 **N-M**.)
6. Reinstall enrichener cable to enrichener bracket and tighten nut securely.
7. Route new horn ground wire (17) through large opening in engine bracket. Reconnect wires from harness to horn. Install wire into horn wire bracket. Attach to rear head top motor mount bolt.
8. Position horn assembly (4) into place onto rubber mount (2). Install lockwasher (6) over stud. Secure assembly using acorn nut (3) from kit. Tighten to 60-180 **in-lbs** (6.7-20 **N-M**.)

⚠ WARNING

Always connect the positive battery cable first. If the positive cable should contact ground with the negative cable installed, the resulting sparks may cause a battery explosion resulting in death or serious injury.

9. Using cable strap, secure excess horn wire to main wiring harness under tank. Reconnect battery and test horn assembly for proper operation.

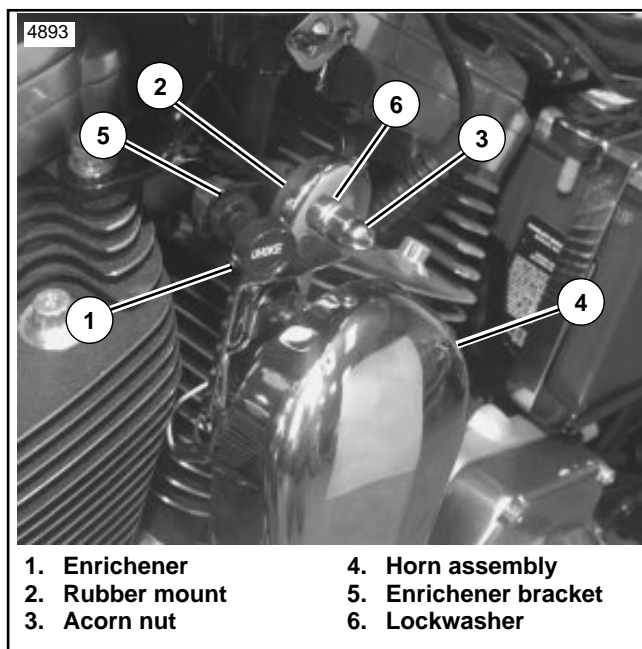
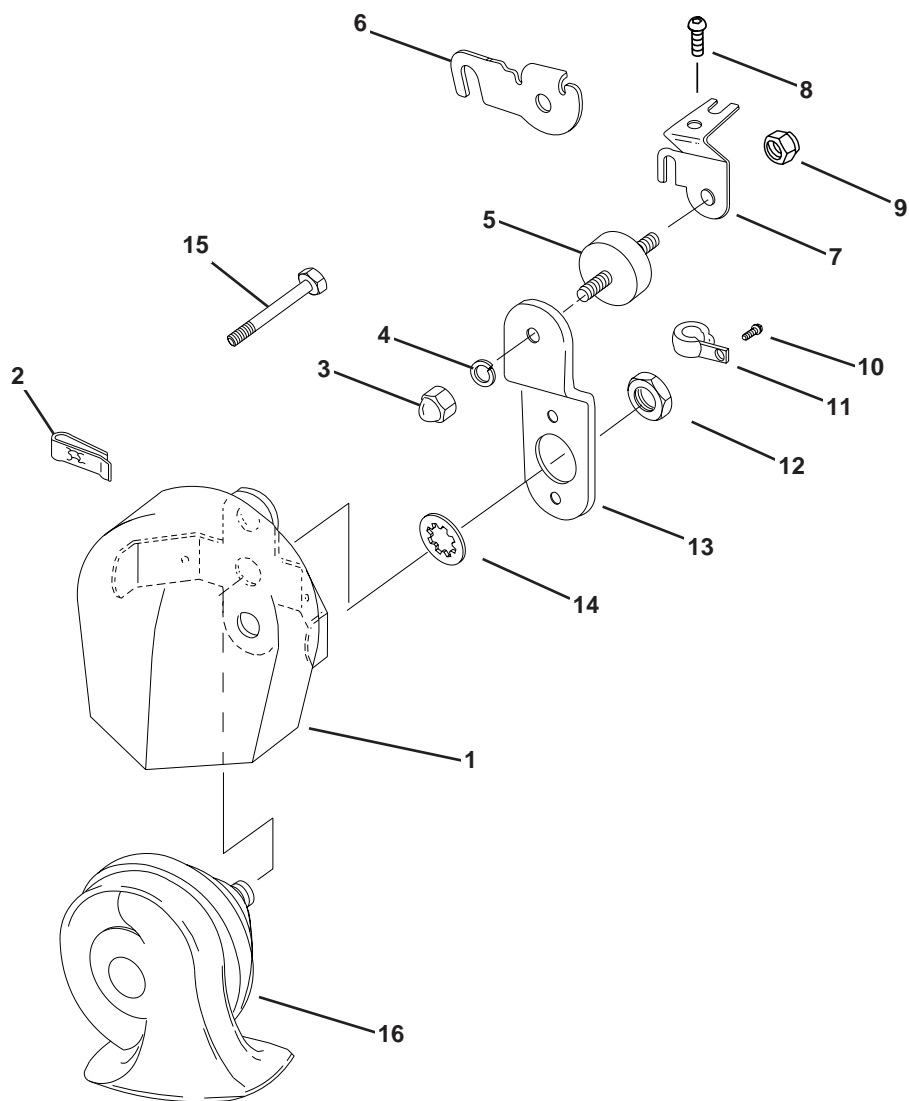


Figure 4. Horn Assembly Installation
1995 and Later Models



Item	Description	Part No.	Item	Part No.	Description
1	Horn cover assembly	69012-93A	10	Screw	3588
2	Clip nut, horn mount	8108	11	Horn wire clip	69062-91A
3	Acorn nut	7527	12	Nut, hex, metric	7495
4	Lockwasher	7041	13	Horn bracket	69120-91
5	Rubber mount	69123-92	14	Lockwasher, internal tooth	7127
6	Enrichener bracket, 1995 and later models only	69035-95	15	Bolt, front fuel tank mount, 5/16-18 x 3-5/8 in., 1993 and later models	4116
7	Enrichener bracket, 1992-1994 models only	69027-92		Bolt, front fuel tank mount, 5/16-18 x 3 in., 1992 models	4086A
8	Screw, button head, 1992-1994 models only	2916	16	Horn assembly	69061-99
9	Locknut	7531	17	Wire, ground Cable strap (not shown)	70087-95 10081