



# INSTRUCTIONS

-J02013

REV. 7-19-2004

Kit Numbers 33897-01 and 33898-01

## SPORTSTER MID CONTROLS

### General

This kit fits 1994 and later XL models and includes all parts required to make a complete conversion to the standard controls from the forward controls.

### WARNING

The rider's safety depends upon the correct installation of this kit. Use the appropriate service manual procedures. If the procedure is not within your capabilities or you do not have the correct tools, have a Harley-Davidson dealer perform the installation. Improper installation of this kit could result in death or serious injury. (00333a)

### NOTE

A Service Manual for your motorcycle is available from your Harley-Davidson Dealer.

### NOTE

All callouts on illustrations refer to item numbers on Kit contents list.

### Kit contents:

ITEM	DESCRIPTION	PART No.
1	Mounting plate, lower right, front	16210-84A
2	Mounting plate, lower left, front	16212-84
3	Shifter peg	34611-65
4	Foot shift lever, chrome	34615-94
5	Master cylinder stiffener, chrome or Master cylinder stiffener, silver	34933-96 34909-90
6	Oil seal	37101-84A
7	Clevis, footrest mounting	42441-90A
8	Brake pedal assembly, chrome or Brake pedal assembly, polished	42605-99 42447-96
9	Screw, 3/8-24 x 1 1/4, hex cap (4)	4337W
10	Screw, 3/8-24 x 5 1/2, hex cap (2)	4413
11	Bolt, 3/8-16 x 1 1/2 hex HD (2)	4721
12	Screw, 1/4-20 x 1 hex socket HD	4741A
13	Footrest with cover, right	50643-82
14	Footrest with cover, left	50647-82
15	Spring washer (2)	50912-72
16	Footrest support, left, chrome	50951-90
17	Cotter pin	534
18	Washer, 3/8 x 7/8 x 7/64 (4)	6026
19	Spacer, 13/32 x 1 x 5/16 (2)	6152
20	Rubber washer, 1/2 x 3/4 x 1/4	7019
21	Jam nut, 5/16-24 x 3/16 x 1/2 hex	7744
22	Locknut, 3/8-16 x 7/16 x 9/16 hex (2)	7778
23	Locknut, 3/8-24 x 13/32 x 11/16 hex (5)	7780
24	Locknut, 1/2-20 x 1/4 hex	7824
25	Screw, 5/16-18 x 3 1/2 curled	879A

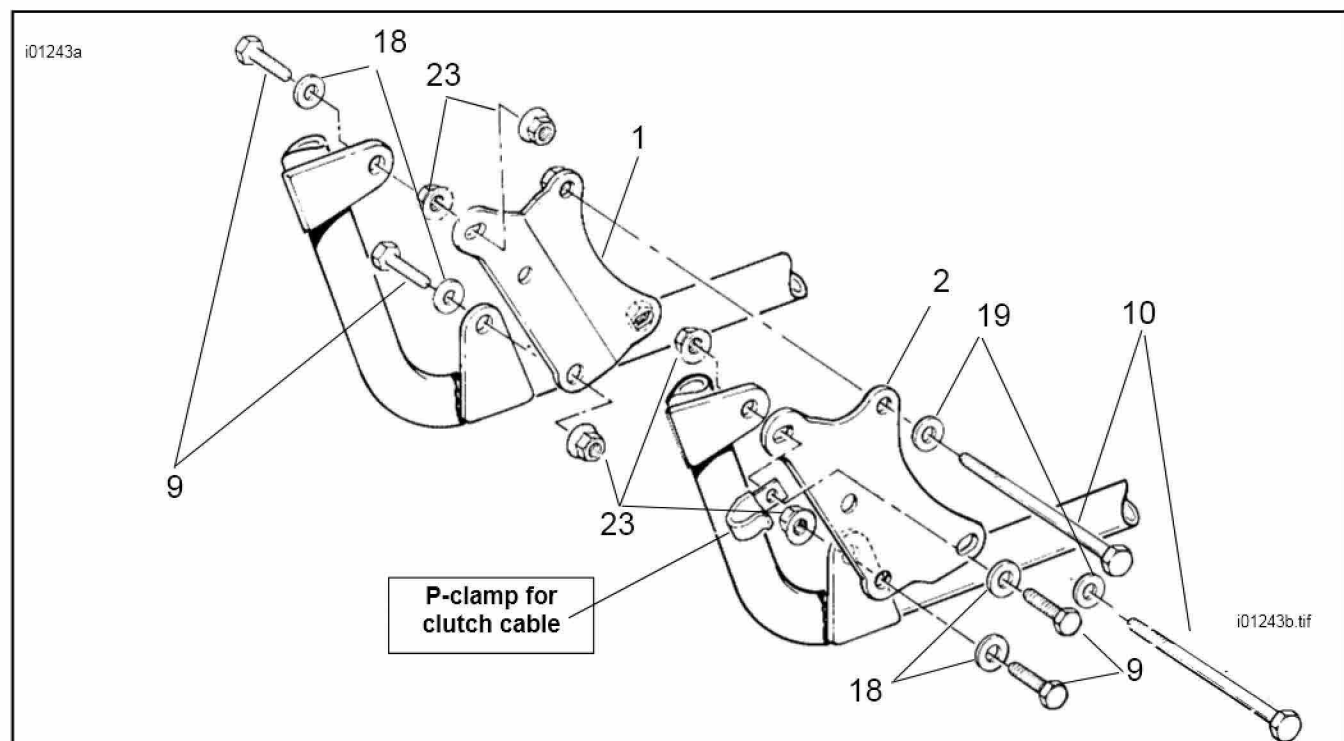


Figure 1. Front Motor Mounts

## Installation

### LEFT (SHIFTER) SIDE

1. Remove stock footrest assembly.
2. Remove stock shift lever.
3. See Figure 1. Remove left side motor mount and save P-clamp for clutch cable. The bolts will be replaced.
4. Install left side motor mount (2) in place of stock motor mount using washers (19), bolts (9 and 10) and locknuts (23) from kit. Tighten bolts to 25-30 ft-lbs (41-47 Nm). Make sure to reinstall the P-clamp and clutch cable in the same hole location they were removed from in step 3.
5. See Figure 4. Install shift lever (4) from kit using stock fastener; rubber washer (20) and oil seal (6). Tighten Pinch bolt to 80-110 in-lbs.
- 6.. To install footrest, place a spring washer (15), along with the mount end of the footpeg, inside the slots of the clevis. Make sure the spring washer is positioned inside the clevis with the square edge towards the inside as shown in Figure 3. Secure footpeg and spring washer with bolt (11) and locknut (22). Tighten locknuts to 19 ft-lbs (26 Nm). Install footrest support (16) with bolts (25). Tighten bolts to 16-28 ft-lbs.

### RIGHT (BRAKE) SIDE

1. Remove exhaust system according to Service Manual instructions.
2. Remove clip that holds brake line on sprocket cover.
3. Remove the two sockethead screws that hold the rear brake master cylinder in place. Loosen rear brake jam nut at master cylinder. Turn brake push rod at flats until rod end is free.
4. Remove the three screws that hold the sprocket cover in place.
5. See Figure 2. Remove the cotter pin (17) and locknut (24) that holds the footrest mount in place. Replace the footrest mount with sockethead capscrew (12) from kit and install the locknut (24).
6. Reinstall sprocket cover and brake line clip.
7. See Figure 1. Remove right side stock motor mount and save nuts and washers. The bolts will be replaced.
8. Install C-clip to hold support in place.
9. Install right side motor mount assembly in place of stock motor mount using washers (18) and nuts (23). Tighten bolts to 25-30 ft-lbs (41-47 Nm).
10. Install brake pedal assembly (8) into master cylinder by turning push rod at flats to thread on rod end.
11. To install footrest, place a spring washer (15), along with the mount end of the footpeg, inside the slots of the clevis. Make sure the spring washer is positioned inside the clevis with the square edge towards the inside as shown in Figure 3. Secure footpeg and spring washer with bolt (11) and locknut (22). Tighten locknuts to 19 ft-lbs (26 Nm).

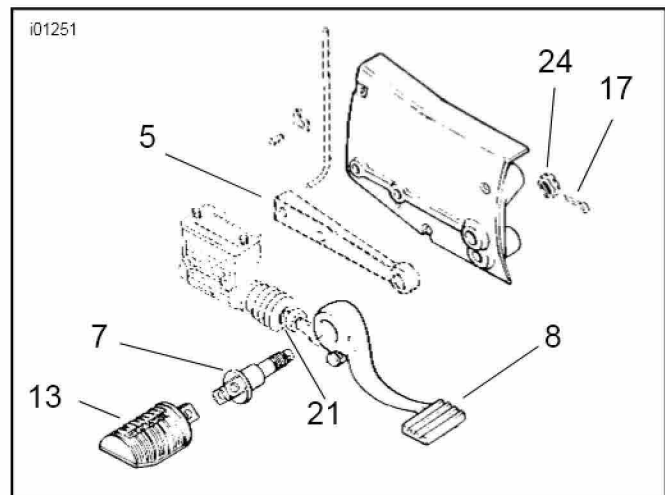


Figure 2. Brake Side Footrest Mounting

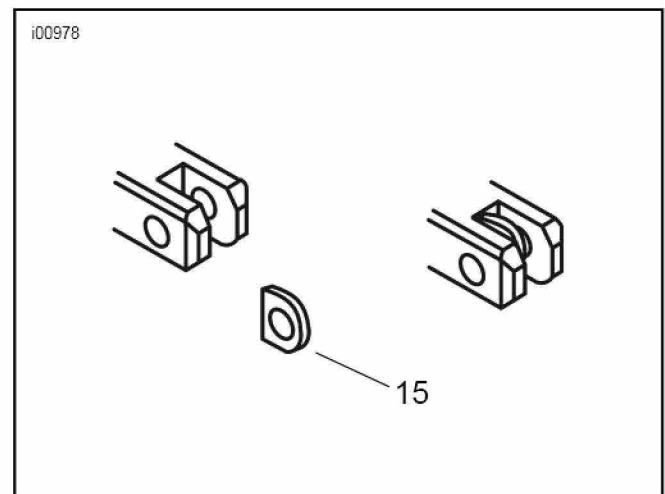


Figure 3. Footrest

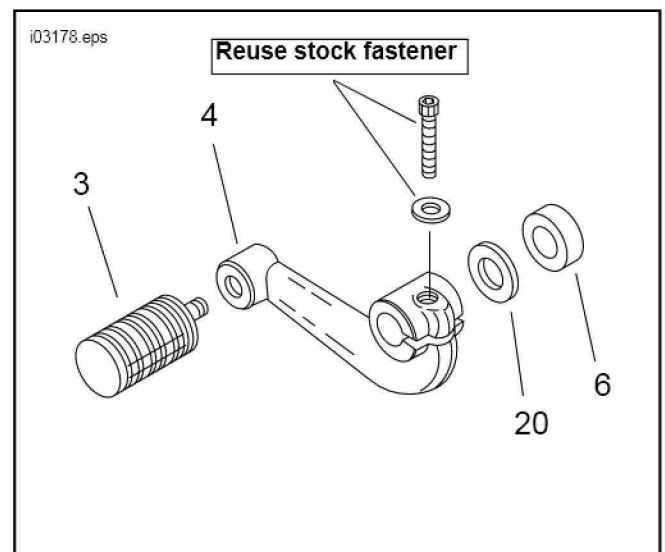


Figure 4. Shifter Assembly

12. Reinstall exhaust system according to Service Manual procedures.
13. Adjust rear brake free play according to instructions in applicable Service Manual.
14. Check brake for proper operation.

**⚠ WARNING**

After repairing the brake system, test brakes at low speed. If brakes are not operating properly, testing at high speeds can cause loss of control, which could result in death or serious injury. (00289a)

i03179

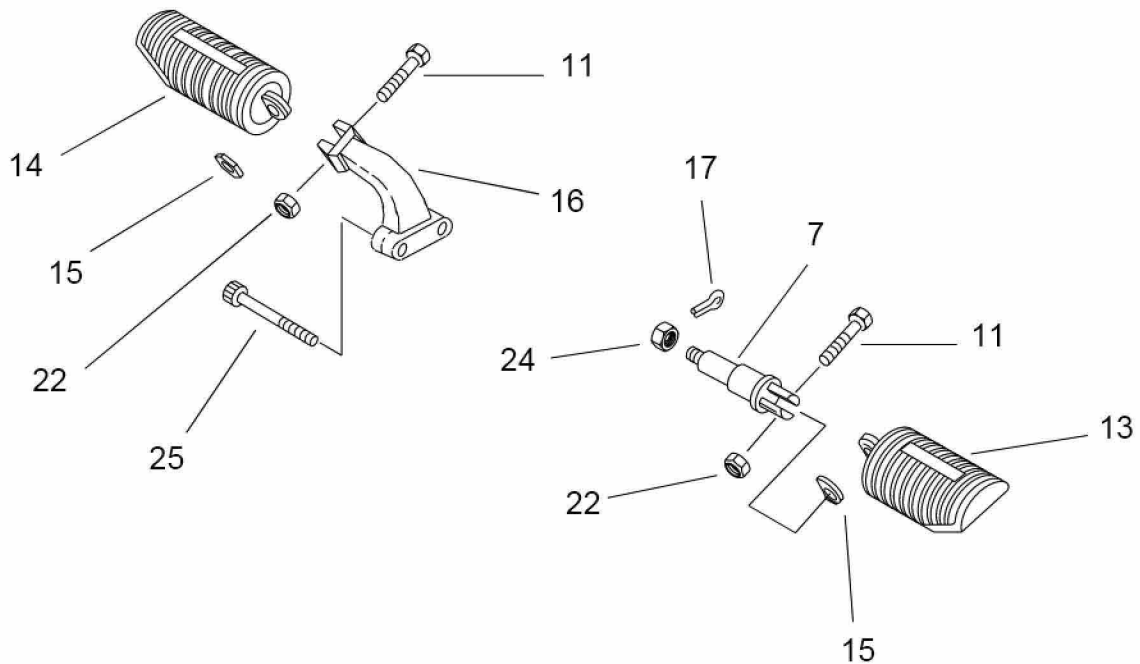


Figure 5. Footrest Assembly