



INSTRUCTIONS

-J02296

REV. 5-29-02

Kit Number 69178-02

HIGH OUTPUT HORN FOR SPORTSTER

General

This kit is designed for installation on 1996 and later XL1200 and XL1200C (Custom) Model Motorcycles.

When installing this kit with Sportster Voltage Regulator cover, part number 74579-97, refer to the instruction sheet (J00974) included with that kit for horn relocation.

See Service Parts Illustration for a list of kit contents.

WARNING

The rider's safety depends on the correct installation of this kit. **USE THE APPROPRIATE SERVICE MANUAL PROCEDURES.** If the procedure is not within your capabilities or if you do not have the correct tools, have your Harley-Davidson Dealer perform the installation. Improper installation of this kit could lead to an accident and result in death or serious injury.

NOTE

A Service Manual for your motorcycle is available from your Harley-Davidson dealer.

Installation

WARNING

To protect against shock and accidental start-up of vehicle, disconnect the negative battery cable before proceeding. Inadequate safety precautions could result in death or serious injury.

WARNING

Always disconnect the negative battery cable first. If the positive battery cable should contact ground with the negative cable installed, the resulting sparks may cause a battery explosion which could result in death or serious injury.

1. Disconnect battery cables, negative cable first.
2. Follow instructions in applicable Service Manual and remove seat.
3. Follow instructions in applicable Service Manual and remove fuel tank.
4. See Figure 1. Remove left side cover from frame. Remove plastic cover protecting electrical posts on circuit breaker. (inside cover). Locate silver post on electrical bracket and remove nut.
5. See Service Parts Illustration and Figure 2. Obtain Wiring Harness (12) from kit. Install orange/white wire ring terminal to silver post on circuit breaker and reinstall nut. Tighten securely. Reinstall plastic cover to protect posts.

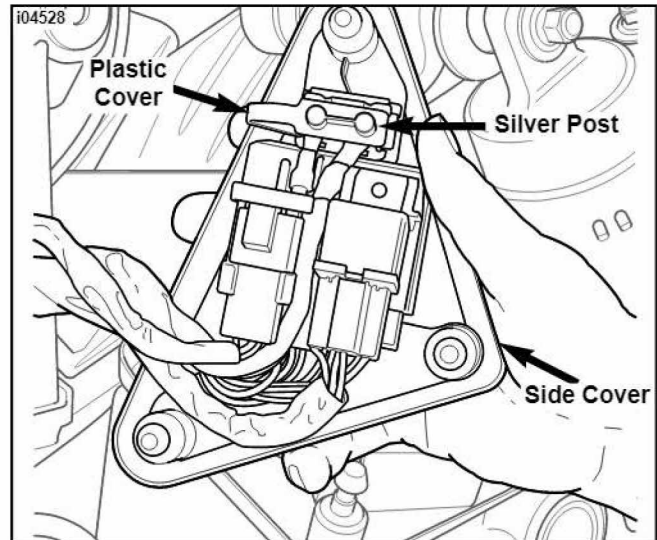


Figure 1. Remove Side Cover and Locate Silver Post

6. See Figure 2. Begin routing new horn wiring harness upward between frame backbone and along left side of main harness toward front of bike.
7. Using cable strap from kit, secure wire harness relay to main harness as shown.
8. If screw is not present, obtain Self-Tapping Screw (9) from kit. Use existing screw or screw from kit and install black wire ring terminal to small hole in upper frame crossmember. Tighten securely.

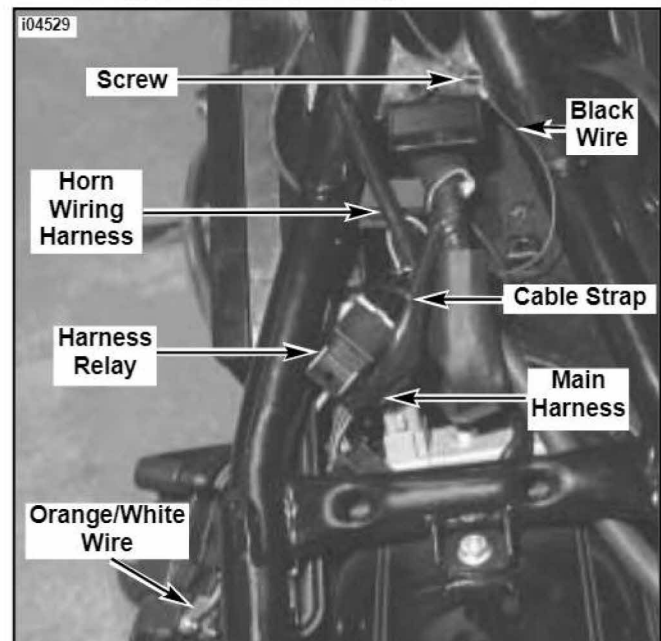


Figure 2. Route Harness Wiring

9. See Figure 3. Continue routing harness toward front of bike then perform the following:
 - a. Start at the existing horn and trace the path of existing horn harness up to approximate center of tank mount under frame.
 - b. Carefully cut the conduit from the existing horn harness exposing yellow/black wire.
 - c. Locate and cut the yellow-black wire. Strip the wire ends and obtain the sealed butt splice connector from kit. Follow instructions in applicable Service Manual and splice the yellow/black from the new horn harness to the yellow/black of the existing harness.

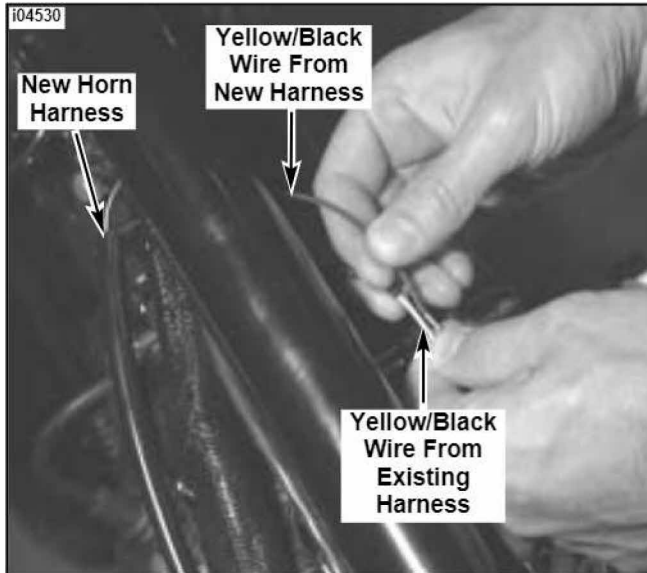


Figure 3. Connect New Harness to Existing Harness

10. See Figure 4. Continue to route terminal end of horn harness forward and down behind the two front frame downtubes.
11. Follow routing back and using cable straps, secure new harness to frame at various places along path.

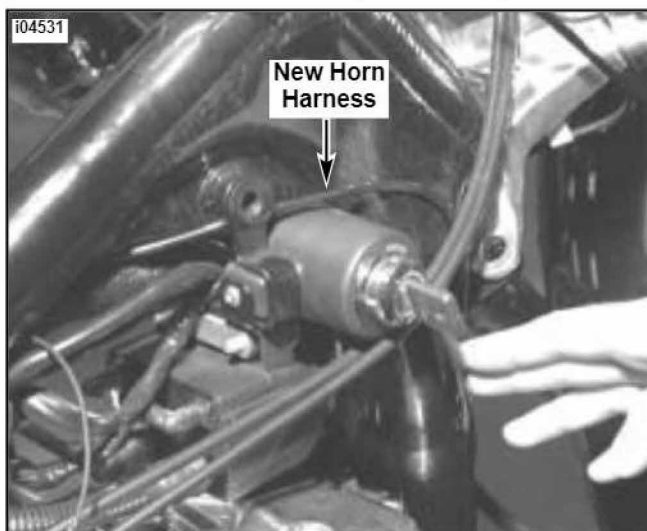


Figure 4. Route Harness to New Horn Location

Assemble Horn

12. See Figure 5. At frame crossmember and upper engine front mount (between downtubes), remove the two bolts, two washers and nut plate securing the engine mounting bracket to the frame crossmember. Save bolts, washers and nut plate for installation.

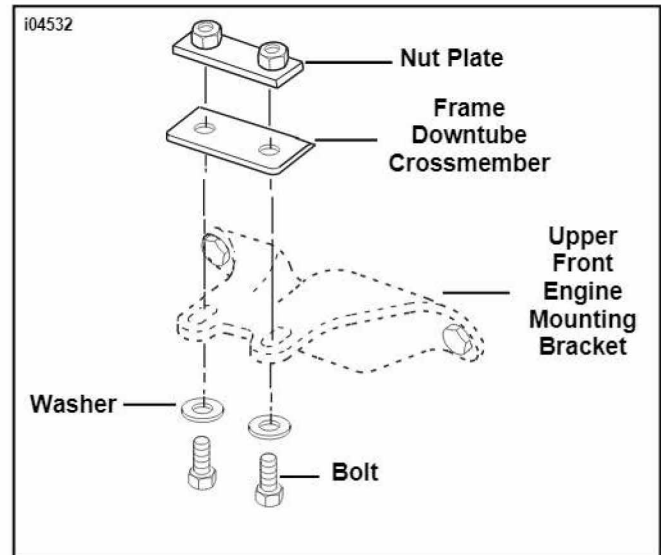


Figure 5. Remove Upper Front Engine Mount Hardware

13. See Service Parts Illustration and Figure 6. Obtain the Horn Frame Bracket (2) from kit. Install horn frame bracket under upper front engine mounting bracket as shown. Install bolts (with washers) through horn frame bracket, upper front engine mounting bracket, frame crossmember and into nut plate. Tighten bolts to 25-30 ft-lbs (34-41 Nm).

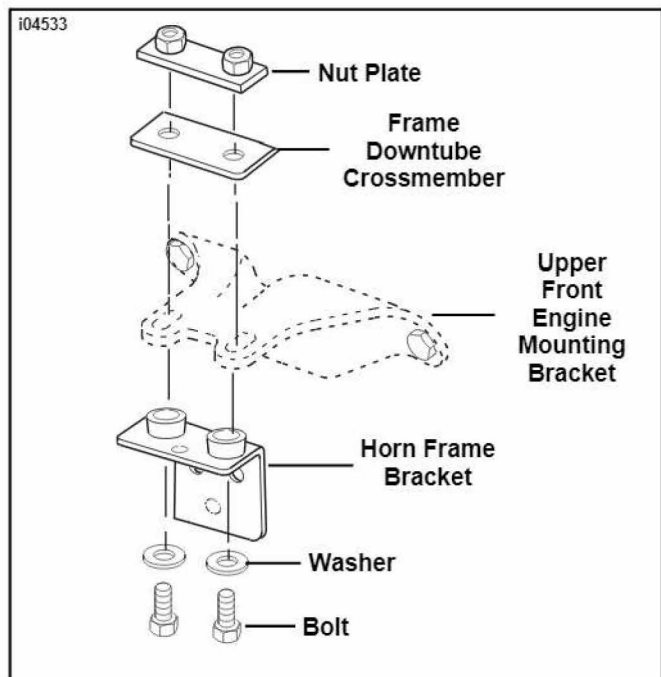


Figure 6. Install Horn Frame Bracket

14. See Service Parts Illustration and Figure 7. Obtain the Horn (7), two Horn Brackets (6) and metric Flange Nut (5) from kit. Sandwich the two brackets together and orient brackets with three mounting holes toward the top and lower hole over horn stud. Make sure horn terminals are at the top of the horn. Place a few drops of Loctite 243 (blue) on threads of flange nut and and fasten bracket to horn. Tighten to 110 **in-lbs** (7-14 Nm).
15. Obtain three Screws (4) and three Wellnuts (3) from kit. Orient the wellnuts as shown and push into bracket. Install three screws through horn bracket and into wellnuts. Tighten screws to 6-9 **in-lbs** (.7-1 Nm) making sure wellnuts expand thoroughly and secure horn bracket to frame bracket.
16. Obtain Ground Wire (1) from kit. Remove the right side engine mounting bracket nut. Install ring terminal of ground wire to stud and reinstall. Tighten nut to 25-30 ft-lbs (34-41 Nm).

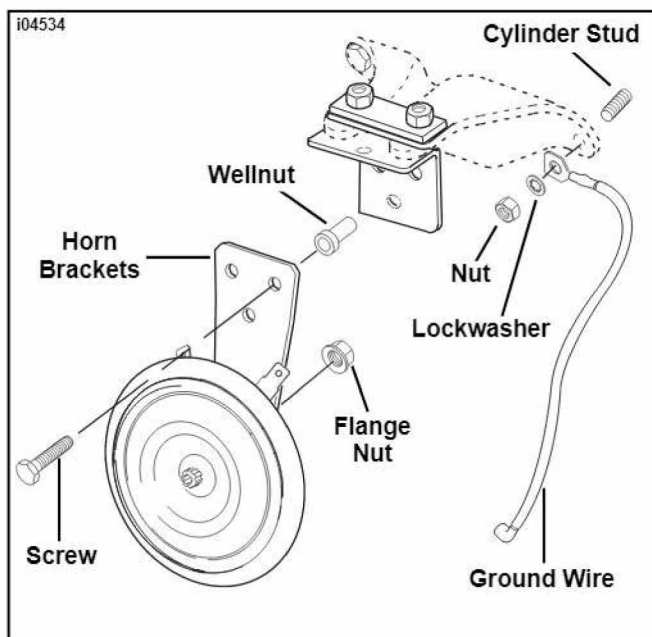


Figure 7. Install Horn Assembly

17. Attach black (ground) flag terminal to right horn spade terminal. Attach new wire harness flag terminal (black/yellow wire) to left horn spade terminal. Secure wires to frame using remaining cable straps.
18. Follow instructions in applicable Service Manual and reinstall fuel tank.

⚠ WARNING

Always connect the positive battery cable first. If the positive cable should contact ground with the negative cable installed, the resulting sparks may cause a battery explosion resulting in death or serious injury.

19. Reconnect battery cables, positive cable first.
20. Follow instructions in Service Manual and install seat.

⚠ WARNING

After installing seat, pull upward on front of seat to be sure it is locked in position. If seat is loose, it could shift position during vehicle operation and startle the rider, causing loss of control and personal injury.

21. Test horn for proper operation.



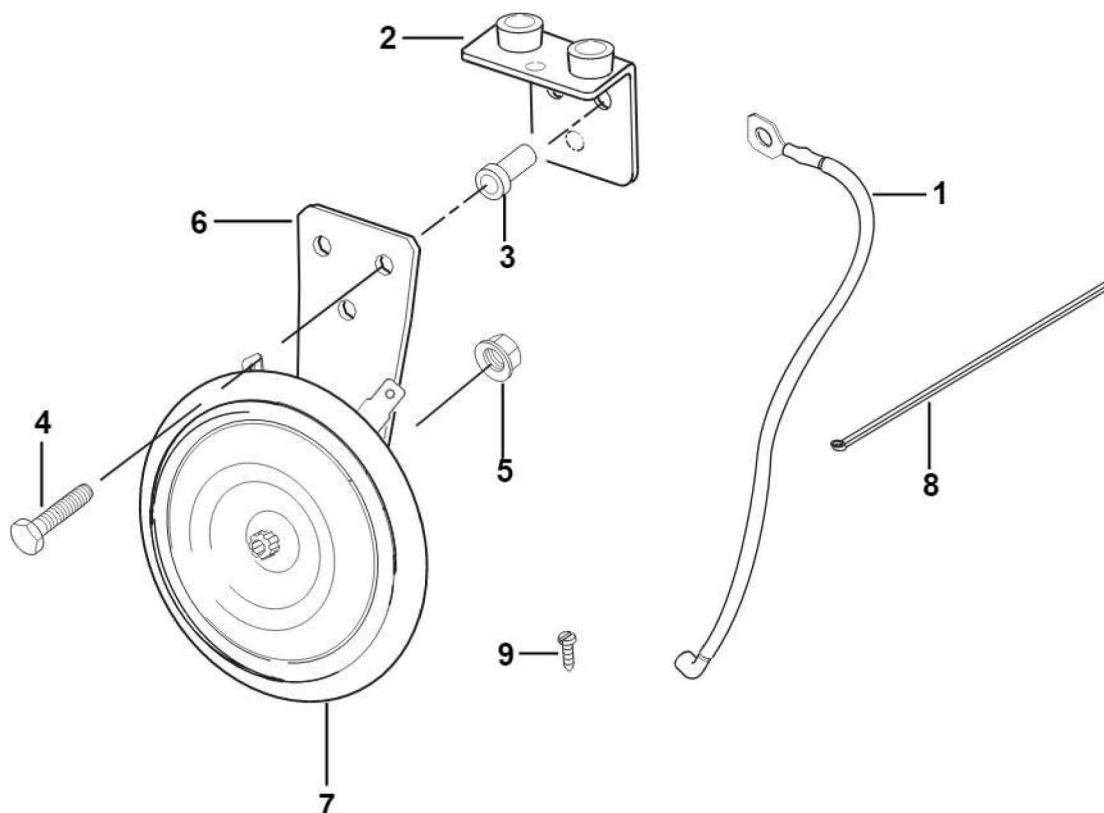
Service Parts

Part No. 69178-02

Date 11/01

High Output Horn Kit For Sportster

i04535



Item	Description (Qty)	Part. Number	Item	Description (Qty)	Part. Number
1	Ground wire	70068-96	7	Horn	69056-99
2	Bracket, horn frame	69135-96A	8	Strap, cable (4)	10065
3	Wellnut (3)	8098	9	Screw, self tapping #10	4104
4	Screw (3)	3606	10	Wire harness (not shown)	71094-02
5	Nut, metric hex, flange	7495	11	Butt Splice (not shown)	70586-93
6	Bracket, horn (2)	69058-99			