



INSTRUCTIONS

-J02968

2013-02-19

SPORTSTER LEATHER SADDLEBAG KIT

GENERAL

Kit Number

90342-04A - XL Leather Saddlebags

90598-04A - Premium Harness Leather Saddlebags

Models

For model fitment information, see the P&A Retail Catalog or the Parts and Accessories section of www.harley-davidson.com (English only).

Additional Parts and Tools Required

Separate purchase of additional parts or accessories may be required for proper installation on your model motorcycle. Refer to the latest Harley-Davidson Genuine Motor Accessories and Genuine Motor Parts catalog for a list of required parts or accessories for your model.

Proper installation of this kit also requires the following:

Loctite® Threadlocker and Sealant - Blue (99642-97)

Snap-On TT600-3 pick tool

Kent-Moore UltraTorch UT-100 or other suitable radiant heating device

⚠ WARNING

Do not exceed saddlebag weight capacity. Put equal weight in each bag. Too much weight in saddlebags can cause loss of control, which could result in death or serious injury. (00383a)

NOTE

Maximum saddlebag weight is 10 pounds (4.5 Kg) for each bag.

⚠ WARNING

Rider and passenger safety depend upon the correct installation of this kit. Use the appropriate service manual procedures. If the procedure is not within your capabilities or you do not have the correct tools, have a Harley-Davidson dealer perform the installation. Improper installation of this kit could result in death or serious injury. (00333b)

NOTE

This instruction sheet references service manual information. A service manual for your model motorcycle is required for this installation and is available from a Harley-Davidson Dealer.

Kit Contents

See Figure 3 and Table 1.

Existing Equipment Removal and Installation

⚠ WARNING

To prevent accidental vehicle start-up, which could cause death or serious injury, disconnect negative (-) battery cable before proceeding. (00048a)

1. Refer to the service manual and follow the instructions given to remove the seat, and disconnect the negative battery cable. Save seat mounting hardware for later use.
2. Properly support motorcycle under frame with stand or suitable blocking to prepare for addition of saddlebags. Support rear wheel to prevent it from falling when rear shock absorbers are disconnected in the following step.
3. See Figure 1. Disconnect the rear shock absorbers from the swing arm by removing bolt (1), washer (2) and nut (4) from the shock absorber (3). Repeat on opposite side of the motorcycle.
4. Carefully lower rear wheel enough to access the inside of the rear fender.

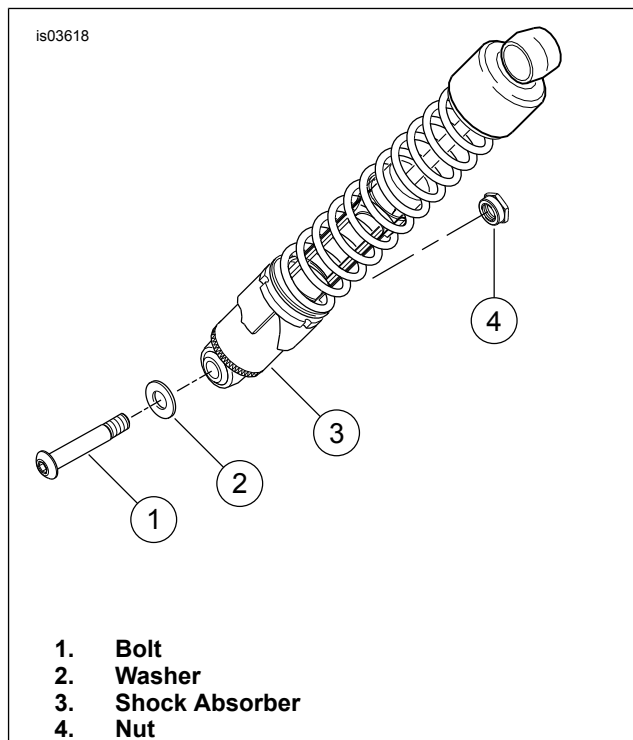


Figure 1. Rear Shock Absorber - Right Side Shown

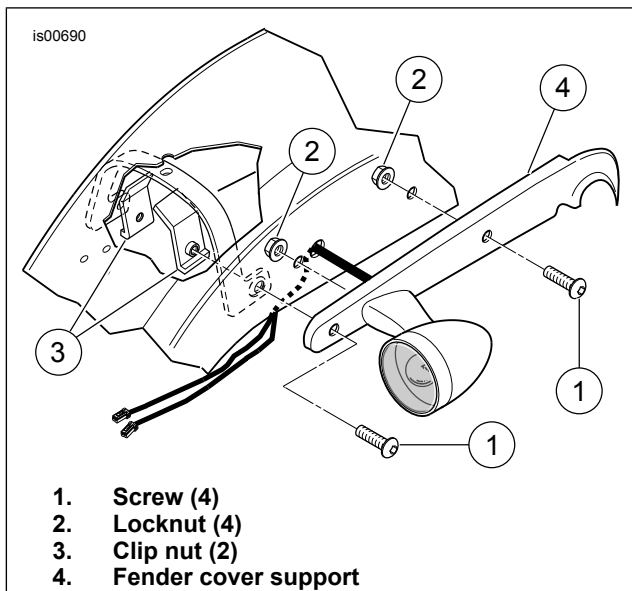


Figure 2. Rear Fender Support Removal

Saddlebag Installation

1. See Figure 3. Remove the rear shock absorber bolt (Figure 1, Item 1). Position the 0.531 x 0.75 x 0.25 inch spacer (7) and the front saddlebag bracket attachment hole over the rear shock absorber bolt location. Secure with the 1/2-13 x 3.75 inch screw (5).
2. See Figure 3. Position the 0.325 x 0.75 x 0.25 inch spacer (8) and the rear saddlebag attachment hole over the second hole on the rear of the fender, fender support cover, and relocation pad. From the underside of the fender, insert a 5/16-18 x 3.00 inch screw (6) and secure with locknut (10). Tighten locknut (10) to 32.5–36.6 N·m (24–27 ft-lbs).
3. Tighten the front screw (5) to 28.5–36.6 N·m (21–27 ft-lbs).
4. See Figure 3. Assemble an isolator washer (12) onto an isolator bushing (13). Place a screw (15) through the bushing.
5. Place the screw and bushing assembly into the top hole inside the saddlebag back.
6. See Figure 3. Push a saddlebag isolator (14) over bushing with cone shape toward saddlebag.

7. Place saddlebag in position on bracket and insert the new screw (15) into the bracket. Do not tighten.
8. Repeat steps 4 through 7 for remaining holes. With all isolators in place, tighten screws to 10.8–13.6 N·m (96–120 in-lbs).
9. Repeat Steps 1 through 8 for the opposite saddlebag.
10. Raise rear wheel until the rear shock absorbers align with shock absorber mounting holes on the swingarm. Support the wheel to prevent it from falling during the following step.
11. See Figure 1. Attach rear shock absorber to swingarm by installing bolt (1), washer (2) and nut (4). Tighten bolt to 61.1–67.9 N·m (45–50 ft-lbs). Repeat step on opposite side of motorcycle.

Install Reflectors

⚠ WARNING

Federal Motor Vehicle Safety Standard (FMVSS) 108 requires motorcycles to be equipped with rear and side reflectors. Be sure rear and side reflectors are properly mounted. Poor visibility of rider to other motorists can result in death or serious injury. (00336b)

1. See Figure 3. Measure approximately 1-1/2 in. (38 mm) from the bottom edge of the saddlebag. Orient the reflector horizontally and carefully center the reflector mount between the straps of bags with straps or locate it at the rearward portion of bags without straps. Mark hole location.
2. Using appropriate tool, make two 3/16 in. holes in saddlebag.
3. Install reflector mount (3) on saddlebag using two pushnuts (2).
4. Remove adhesive backing from reflector (4) and install on mount.
5. Repeat steps 1 through 4 for the opposite saddlebag.

Install Seat

⚠ WARNING

After installing seat, pull upward on seat to be sure it is locked in position. While riding, a loose seat can shift causing loss of control, which could result in death or serious injury. (00070b)

1. See service manual instruction to install the seat.

SERVICE PARTS

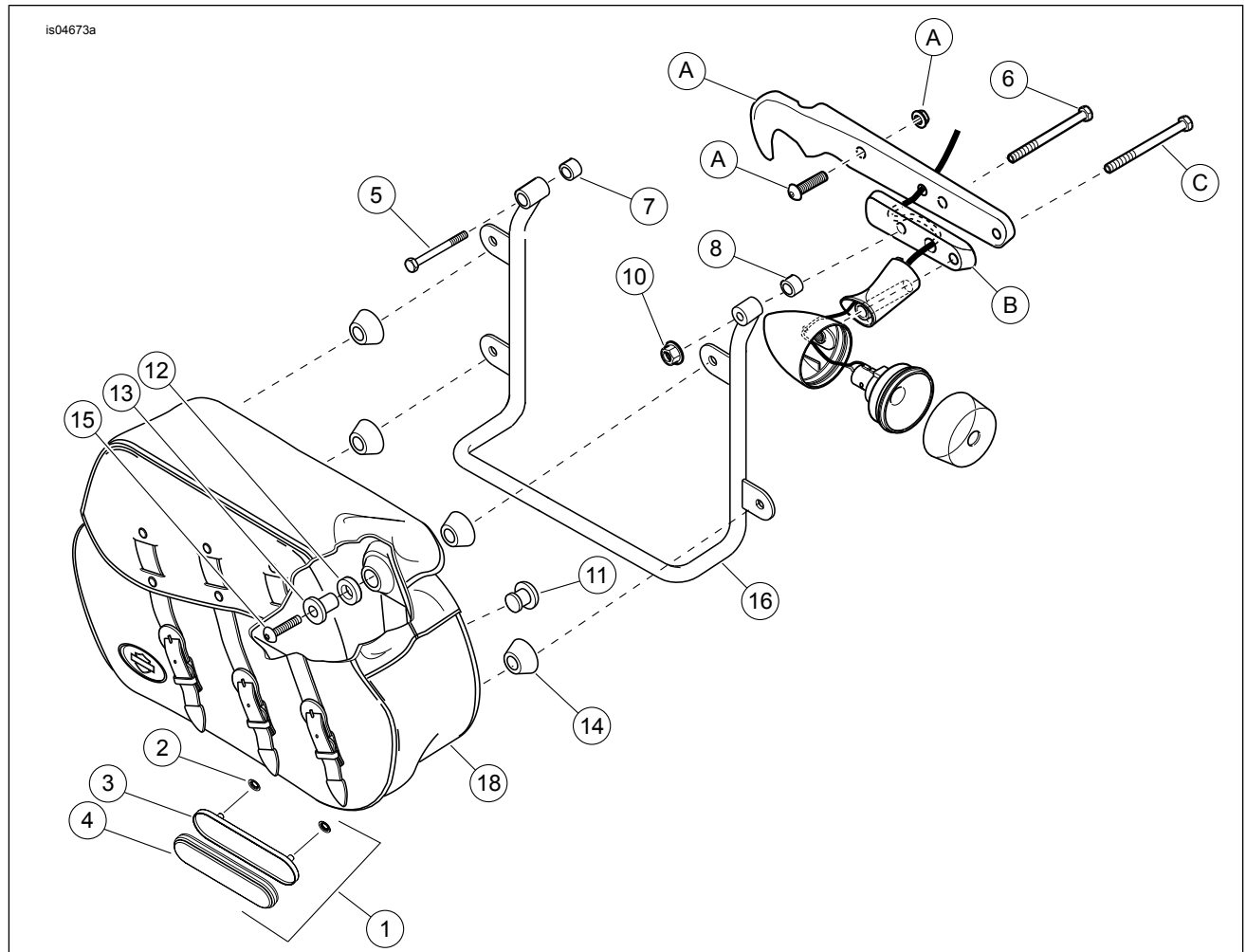


Figure 3. Service Parts: Leather Saddlebag Kit

Table 1. Service Parts: Leather Saddlebag Kit

Item	Description (Quantity)	Part Number
1	Reflector Kit (includes items 2-4)	59480-04A
2	• Pushnut (2)	8126A
3	• Mount, reflector	Not Sold Separately
4	• Reflector, red	59270-10
5	Screw, hex cap 1/2-13 x 3.75 (2)	3829
6	Screw, hex cap 5/16-18 x 3.00 (2)	4375
7	Spacer, 0.531 x 0.75 x 0.25 (2)	53035-04
8	Spacer, 0.325 x 0.75 x 0.25 (2)	53034-04
9	Spacer, 0.39 x 0.88 x 0.22 (2)	Not Sold Separately
10	Locknut, 5/16-18 (2)	7531
11	Bumper (4)	62123-66
12	Isolator washer (8)	90678-94
13	Isolator bushing (8)	90676-94
14	Isolator (8)	90677-94
15	Screw, button head, 5/16-24 x 1.25 (8)	90578-94
16	Support, left	90608-96
17	Support, right (not shown)	90625-96A
18	Saddlebag, LH, for Kit 90598-04A	90600-96A
	Saddlebag, LH, for Kit 90342-04A	90303-98B
19	Saddlebag, RH, for Kit 90598-04A (not shown)	90605-96A
	Saddlebag, RH, for Kit 90342-04A (not shown)	90304-98B
20	Leather care kit (1) (not shown)	Not Sold Separately
21	Disconnect, male with buckle (for kit 90342-04A only) (not shown)	88295-07
Items mentioned in text, but not included in kit:		
A	Fender support cover and hardware	
B	Rear directional relocation pad (2)	Included with Turn Signal Relocation Kit (part number 68474-04)
C	Screw	