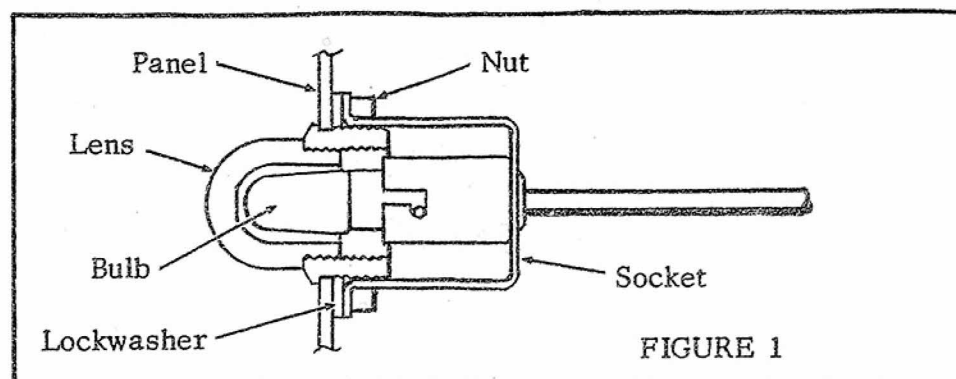


**PART NUMBER**

67893-66  
Orig. 10-65

**INSTRUCTIONS****HARLEY-DAVIDSON**

**GENUINE PARTS  
AND ACCESSORIES**

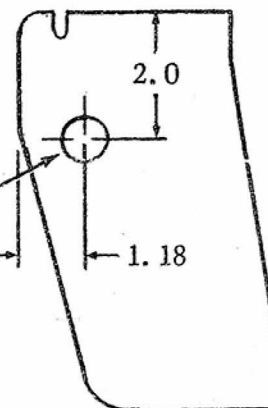
**HIGH BEAM INDICATOR LAMP KIT****FIGURE 1**

Assemble lamp parts as shown above on all models. If this lamp is installed on motorcycles with 6 volt electrical system, remove bulb and substitute 6 volt bulb, part No. 71090-47 (Trade No. 44). Fiber washer supplied with lamp parts is not used and should be discarded.

**ELECTRA GLIDE, DUO-GLIDE AND SERVI-CAR:** Remove right fork housing panel. Locate, centerpunch and cut or drill 11/16 in. dia. hole as shown in Figure 2. Install lamp assembly on panel as shown in Figure 1. Reinstall panel and attach lamp wire terminal to terminal No. 21 of fork terminal plate.

Rear Of  
Right Fork  
Housing  
(FL, FLH)

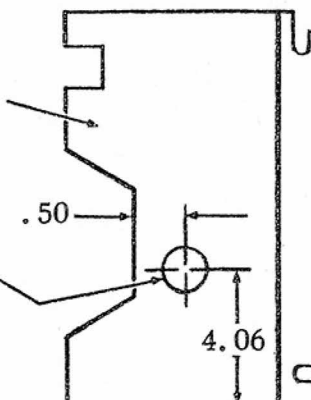
11/16 Dia.  
Hole

**FIGURE 2**

**SPORTSTER XLH:** Remove right fork housing panel. Locate, centerpunch and cut or drill 11/16 in. dia. hole as shown in Figure 3. Install lamp assembly on panel as shown in Figure 1. Reinstall panel and attach lamp wire terminal to terminal No. 21 of fork terminal plate.

Rear Of  
Right Fork  
Panel (XLH)

11/16 Dia.  
Hole

**FIGURE 3**